

BIERLEIN



Recently Completed Automotive Projects:

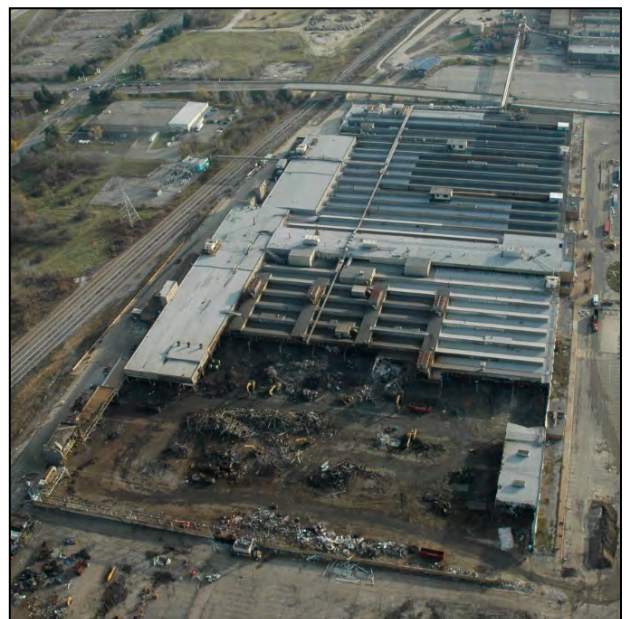
General Motors Corporation

Demolition of the 1.4 million square foot Pontiac Metal Fab Stamping Plant for General Motors Company. The project required the asset recovery of equipment, asbestos abatement of piping and 350,000 square foot roofing material and environmental decommissioning of plant. Bierlein also crushed 40,000 tons of concrete and excavated and transported 50,000 cubic yards of soil for reuse onsite. The project was completed on time and 95% of the plant was recycled.



Racer Trust Fund / General Motors Corporation

Asbestos abatement, environmental remediation, asset recovery and demolition of 1.25 million square foot former auto production facility in Flint, Michigan.



BIERLEIN

DaimlerChrysler

Demolition of the 4 million square foot DaimlerChrysler Jeep Assembly Plant in Toledo, Ohio. This project included all industrial buildings, powerhouse and associated structures and stacks. The job also included the excavation and transporting of 110,000 cubic yards of impacted soils. Materials were transported and placed on site. Bierlein Companies performed asset recovery,



decommissioning and demolition for Daimler-Chrysler at the Toledo Jeep Complex in 2007. Prior to Bierlein mobilizing to the site, Daimler-Chrysler conducted a Dove Bid Auction to sell assets in an effort to off-set decommissioning and demolition costs. After the auction, Bierlein mobilized to the site to begin decommissioning and demolition activities. In addition, Bierlein sent our asset recovery team to market additional assets that remained at the site after the Dove Bid Auction was completed. Our familiarity with the facility and our contacts in the asset recovery marketplace allowed our asset recovery team to sell millions of dollars of assets prior to demolition, splitting the money with Chrysler.
